

EAGLE  TOOLS

NEW!

NEW!

NEW!

**DECEMBER 2023**

**TOOL LAB**

**TOOLBOXES**



ECO MASTER SERIES TOOL BOXES

- Interior Removable Tray
- Handy Organisers in Lid
- Hinged Lid with Plastic Clamps
- Carrying Handle
- Polypropylene Construction



• CONTENTS NOT INCLUDED

Code	Size	Dimensions
TL100	13"	320x158x13mm
TL101	16"	410x213x195mm
TL102	19"	480x260x240mm
TL103	22"	570x315x295mm

16" MULTI FUNCTIONAL CANTILEVER STORAGE BOX 3 STOREY TRAYS

- 28 handy storage compartments
- Transparent Lid



• CONTENTS NOT INCLUDED



Code	Size	Dimensions
TL150	16"	390x235x79.5mm

17” MULTI FUNCTIONAL CANTILEVER STORAGE BOX 2 STOREY TRAYS

- Handy Organisers in Lid
- 10 Handy Storage compartments



Code	Size	Dimensions
TL152	17”	390x235x79.5mm



PRO MASTER SERIES TOOL BOXES



- Interior Removable Tray
- Handy Organisers in Lid
- Hinged Lid with Metal Catches
- Carrying Handle
- Polypropylene Construction

Code	Size	Dimensions
TL170	13”	330x172x142mm
TL171	16”	415x223x193mm
TL172	19”	485x285x240mm







# MODULAR MULTI DRAWER STORAGE BOX

- 5 Handy compartments to each drawer
- Perfect for storing and carrying screws nuts and bolts etc
- With Lid Storage



Code	Size	Dimensions
TL240	3 Storey	190x390x170mm
TL241	4 Storey	215x390x190mm
TL242	5 Storey	260x390x190mm



## MONOBLOCK STORAGE SET



Code	Type	Dimensions
TL288	6 Drawers	267x157x262mm
TL289	8 Drawers/4 Bins	262x267x157mm
TL285	12 Drawers	250x497x157mm
TL287	12 Drawers	267x157x262mm
TL282	18 Drawers	475x157x381mm
TL286	20 Drawers	262x267x157mm
TL284	26 Drawers	497x157x250mm

- Pull Out Drawers
- Perfect for storing screws, nuts and bolts and smaller DIY items
- Easy access and storage



## 4 DRAWER ORGANISER AND TOOL BOX

- Hinged Lid with plastic catch
- Tool Storage tray
- 4 Removable Storage trays
- A Total of 56 storage compartments



• CONTENTS NOT INCLUDED

Code

TL160

Dimensions

280x275x182mm



**NEW!**

• CONTENTS NOT INCLUDED



## MOBILE PULL ALONG TOOL BOX

- Convenient pull along handle
- Versatile wheels
- Robust metal catches
- Spacious interior
- Pull out tray and 2 separate compartments



Code

TL173

Dimensions

650x400x350mm



MOBILE (DOUBLE-DECKER) TOOL BOX

- Practical two-tier design
- Fold-down pull-along handle
- Large, thick wheels for rough terrain
- Durable metal catches

Code	Dimensions
TL174	490x625x330mm



**NEW!**



• CONTENTS NOT INCLUDED

## HEAVY DUTY POLYPROPYLENE STORAGE BOX

- Clip on lid to secure contents
- Ideal for storage in lofts or garages
- Stackable
- Polypropylene construction
- Excellent for storing large or small items
- Perfect for moving home



Code	Size	Dimensions
TL200	12 Litre	385x295x175mm
TL201	18 Litre	385x295x260mm
TL202	20 Litre	490x380x200mm
TL203	30 Litre	580x380x200mm
TL204	40 Litre	490x380x320mm
TL205	60 Litre	580x380x405mm



• CONTENTS NOT INCLUDED

### HEAVY DUTY IMPACT RESISTANT TOOL TOTE SMALL

- 14 Handy Tool holder holes
- Great for carrying power tools & hand tools
- 2 large Compartments for Hand tools smaller ones for tapes etc.

Code	Size	Dimensions
TL235	Small	142x390x286mm



• CONTENTS NOT INCLUDED

### HEAVY DUTY IMPACT RESISTANT TOOL TOTE LARGE

- 22 Handy Tool holder holes
- Great for carrying power tools & hand tools
- 2 large Compartments for Hand tools smaller ones for tapes etc.

Code	Size	Dimensions
TL236	Large	190x499x357mm





### 12 COMPARTMENT SLIM ORGANISER BOX

• CONTENTS  
NOT INCLUDED

- Sturdy Polypropylene Organiser Box
- With clear lid and tough catches
- Perfect for storing small components

Code

Dimensions

TL231

50x230x150mm



### 14 COMPARTMENT SLIM ORGANISER BOX

• CONTENTS  
NOT INCLUDED

- Sturdy Polypropylene Organiser Box
- With clear lid and tough catches
- Perfect for storing small components

Code

Dimensions

TL232

50x270x200mm



• CONTENTS  
NOT INCLUDED

### 17 COMPARTMENT HEAVY DUTY STACKABLE ORGANISER

- Sturdy Polypropylene Organiser Box
- With clear lid and tough catches
- Clips on the side allow units to be stacked
- Up to 17 configurable compartments

Code

Dimensions

TL230

75x440x327mm



• CONTENTS  
NOT INCLUDED

### 23 COMPARTMENT SLIM ORGANISER

- Sturdy Polypropylene Organiser Box
- With clear lid and tough catches
- Clips on the side allow units to be stacked
- Up to 23 configurable compartments

Code

Dimensions

TL233

50x320x250mm



### 5.5" BETA ORGANISER 9 COMPARTMENT

- 6 movable dividers to create up to 9 compartments

Code	Size	Dimensions
TL220	5.5"	140x100x30mm



### 6.5" BETA ORGANISER 12 COMPARTMENT

- 9 movable dividers to create up to 12 compartments

Code	Size	Dimensions
TL221	6.5"	30x170x100mm



### 8 COMPARTMENT 7" ORGANISER BOX

- 1 large, 1 medium, 6 small compartments

Code	Size	Dimensions
TL213	7"	180x130x35mm



### 8" BETA ORGANISER 15 COMPARTMENT

- 12 movable dividers to create up to 15 compartments

Code	Size	Dimensions
TL222	8"	30x200x100mm



### 12 COMPARTMENT 9" ORGANISER BOX

- 2 large, 2 medium and 8 small Compartments

Code	Size	Dimensions
TL210	9"	232x152x35mm



### 9" BETA ORGANISER 25 COMPARTMENT

- 20 movable dividers to create up to 25 compartments

Code	Size	Dimensions
TL223	9"	42.5x230x166mm





### 10 COMPARTMENT 10" ORGANISER BOX

- 1 extra large, 2 large, 5 medium, 2 small compartments

Code	Size	Dimensions
TL214	10"	240x170x40mm



### 10.5" BETA ORGANISER 36 COMPARTMENT

- 20 movable dividers to create up to 25 compartments

Code	Size	Dimensions
TL224	10.5"	275x195x42.5mm



### 13 COMPARTMENT 11" ORGANISER BOX

- 1 extra large, 3 large, 4 medium and 5 small compartments

Code	Size	Dimensions
TL211	11"	275x205x40mm



### 12 COMPARTMENT 12.5" ORGANISER BOX

- 2 extra large, 2 large, 8 small compartments

Code	Size	Dimensions
TL216	12.5"	320x255x50mm



### 22 COMPARTMENT 13" ORGANISER BOX

- 2 large and 20 small compartments

Code	Size	Dimensions
TL215	13"	330x250x50mm



### 22 COMPARTMENT 13.5" ORGANISER BOX

- 1 extra large, 3 large, 4 medium and 14 small Compartments

Code	Size	Dimensions
TL217	13.5"	340x320x50mm

STACKABLE POLYPROPYLENE STORAGE BIN

- Strong heavy duty design with stackable rim
- Index card slot on the front
- Manufactured from robust injection moulded Polypropylene



Code	Dimensions
TL260	110x165x75mm
TL261	125x195x95mm
TL262	150x245x125mm
TL263	220x350x155mm
TL264	270x410x180mm
TL265	310x490x190mm



Code	Dimensions
TL266	350x220x155mm
TL267	490x310x190mm

TOOLLAB LARGE STACKABLE STORAGE BIN

- A long-lasting and cost-effective storage solution
- Stackable

**NEW!**







**NEW!**

### TOOLLAB LARGE STACKABLE STORAGE BIN WITH CARRY HANDLE

- Ample storage capacity
- Built-in carry handles
- Ideal for managing and storing a wide range of items efficiently

Code	Colour	Dimensions
TL268	Black	480x370x320mm
TL269	Grey	560x410x355mm



### TOOLLAB BELT TOOL POUCH WITH 6 POCKETS

- 6 different sized pockets and a built in metal loop
- Ideal for electricians, engineers, craftsmen and DIY enthusiasts
- Made from heavy duty 1680D Oxford Cloth

Code	Dimensions
TL272	325x250x90mm



### MAGNETIC WRISTBAND

- Keep small parts such as nuts, bolts, screws and drill bits close to hand
- No need to search in your toolbox or pockets for the part you need
- Attach to either your Wrist or Belt

Code	Dimensions
TL274	90x375x5mm



### TOOLLAB TOOL BAG WITH SHOULDER STRAP AND 8 POCKETS

- 8 different sized pockets
- Removeable shoulder strap so can be used as a belt bag
- Designed with a moulded bottom for stability
- Made from heavy duty 600D Oxford Cloth

Code	Dimensions
TL270	230x200x110mm



- Twin Pack - 4 inch and 6 inch diameters
- Keep small parts such as nuts, bolts and screws safe
- Rubber base to protect surfaces

Code	Diameter
TL273	101.6mm/152.4mm



### TOOLLAB ENCLOSED MANUAL WIND DOUBLE SIDED SURVEYORS TAPE MEASURE WITH CARRY HANDLE 50M



- Measure distances up to 50m
- Easy glide wind mechanism makes rewinding smooth and effortless
- Metric and imperial measurements clearly displayed on each side of the tape

Code	Length	Width	Dimensions
TL401	50m	13mm	25x200x200mm





**50m**  
Tape Length

- Measure distances up to 50m
- Simple and easy to play out and rewind
- Metric and imperial measurements clearly displayed on each side of the tape

Code	Length	Width	Dimensions
TL402	50m	15mm	38x135x135mm

#### TOOLLAB ENCLOSED MANUAL WIND SINGLE SIDED SURVEYORS TAPE MEASURE 50M



- Space saving design fits into small tool boxes and pockets
- Simple and easy to rewind with a grip lock
- Metric and imperial measurements clearly displayed on the tape measure

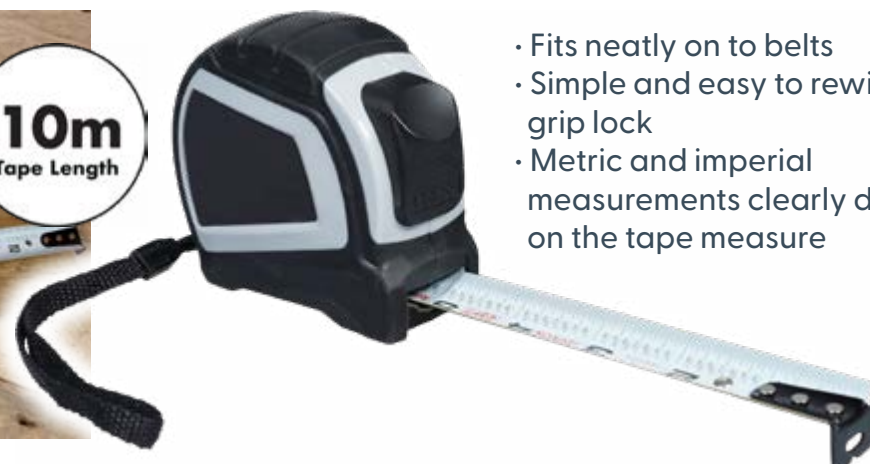
**7.5m**  
Tape Length

Code	Length	Width	Dimensions
TL406	7.5m	25mm	80x80x45mm

#### TOOLLAB AUTO RETRACTABLE TAPE MEASURE WITH GRIP LOCK, CARRY HANDLE AND BELT CLIP 7.5M



**10m**  
Tape Length



- Fits neatly on to belts
- Simple and easy to rewind with a grip lock
- Metric and imperial measurements clearly displayed on the tape measure

Code	Length	Width	Dimensions
TL407	10m	25mm	79x90x47mm

#### TOOLLAB PROFESSIONAL AUTO RETRACTABLE TAPE MEASURE WITH GRIP LOCK, CARRY HANDLE AND BELT CLIP 10M



- Simple and easy to rewind with a grip lock
- Metric and imperial clearly displayed on the tape measure



#### TOOLLAB AUTO RETRACTABLE TAPE MEASURE WITH GRIP LOCK, CARRY HANDLE AND BELT CLIP 3M

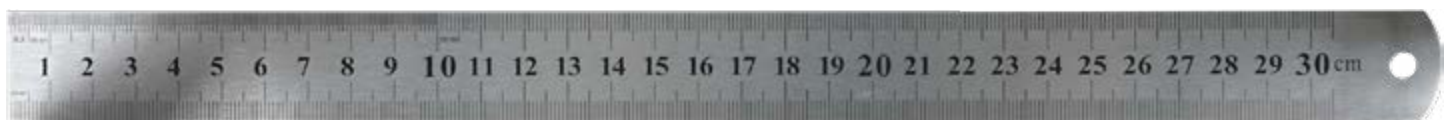
Code	Length	Width	Dimensions
TL403	3m	16mm	68x65x25mm



#### TOOLLAB AUTO RETRACTABLE TAPE MEASURE WITH GRIP LOCK, CARRY HANDLE AND BELT CLIP 5M

- Simple and easy to rewind with a grip lock
- Metric and imperial clearly displayed on the tape measure
- Fits neatly on to belts.

Code	Length	Width	Dimensions
TL404	5m	25mm	65x70x35mm



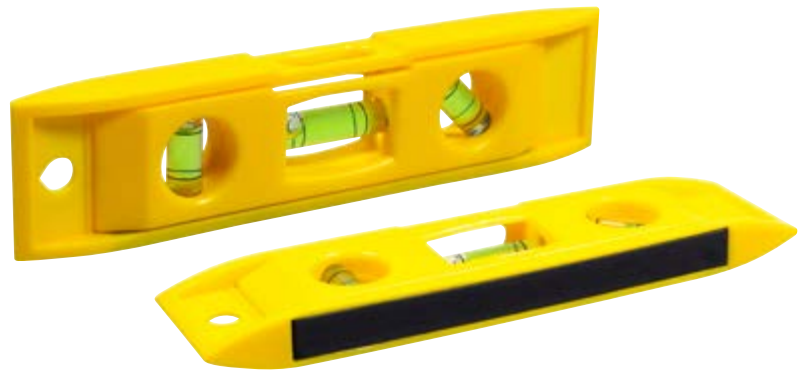
#### TOOLLAB STAINLESS STEEL METAL RULER

- Durable stainless steel construction
- Clear markings for precise measurements
- Convenient hanging point for storage

Code	Size	Dimensions
TL278A	6"	170x12x2mm
TL278B	12"	330x12x2mm







#### TOOLLAB MAGNETIC SPIRIT LEVEL 15CM (6") LENGTH

- 3 bubbles measure horizontal, vertical and 45° levels
- Magnetic strip for hands free usage
- Features a hole for easy hanging and storage

Code	Dimensions
TL275	150x35x15mm



#### TOOLLAB ANTI-FOG SAFETY GLASSES

- Wrap-around shield protects sensitive eyes from flying objects
- Offers distortion free vision with scratch and fog resistance.
- Light weight and snug fitting design
- Filters out up to 90% of UV rays

Code	Dimensions
TL277	140x150x50mm



#### TOOLLAB WINDOW AND TILE SCRAPER TOOL WITH 50MM BLADE

- Remove stubborn paint and labels from glass, windows, stove tops etc.
- Ergonomic handle with easy grip
- Supplied with travel cover for your safety
- Easy to store with hanging point

Code	Dimensions
TL279	170x72x45mm

T8 TORX DRIVER & 22MM SPANNER

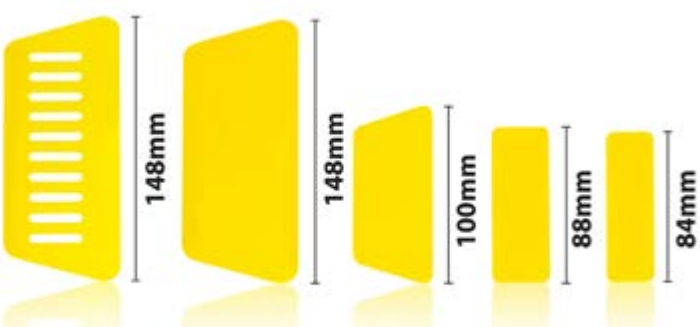
- For SpeakON FXX series, PowerCON TRUE1 TOP and PowerCON FXX
- Aids in dissassembly once the plugs have been tightened



Code	Dimensions (Height)
TL450	Spanner - 110mm / Screwdriver - 154mm

TOOLLAB WALL PAPER AND POSTER SMOOTHERS (SET OF 5)

- Can be used for wall paper, automatic film, tinting film, Vinyl wraps etc.
- Rounded edges reduces marking and paper damage
- Can also be used as a paint shield



Code	Dimensions
TL280	Various

EAGLE HIGH QUALITY 125MM SIDE CUTTERS WITH SPRUNG JAWS



- Cuts cable up to 1mm with ease
- Solid robust design
- Sprung jaws for ease of use
- Thick insulated handles for comfort

Code	Dimensions
Y028	230x65x10mm



EAGLE PROFESSIONAL PRECISION SIDE WIRE CUTTER SNIPS WITH SPRUNG JAWS 125MM

- Razor sharp blades
- Sprung jaw design
- Rust proof coating
- Anti-slip handles

Code	Dimensions
Y028G	120x110x10mm