

INTUSONIC



INTUSONIC INTUWORX PAA42
MEDIA PREAMP / MIXER MEDIA /
FM DAB PLAYER

NEW!



INTUSONIC - INTUGRID - HMA72-
2 ZONE AUDIO ROUTER

NEW!

NEW!

INTUSONIC - INTUGRID
- HZE11 ZONE REMOTE
CONTROL PANEL



NEW!

INTUSONIC INTUCAB 4VM100T
2-WAY FULLRANGE 140W
COLUMN ARRAY SPEAKERS



DESIGNED FOR EASY A4 PRINTING!

INTUCAB SPEAKERS

INTUSONIC INTUCAB 4FW50T 4" - 16 OHM SPEAKER



| CODE | COLOUR |
|--------|--------|
| NTS001 | Black |
| NTS002 | White |



- 4" Wideband driver, 20W AES power handling
- Dual Speakon-compatible connectors (parallel)
- 5.0mm terminal strip connector in parallel
- M10 truss hook mounting point, plus 3xM6 suspension points
- 12mm MDF construction
- Structured scratch-resistant paint, black or white
- Rugged steel front grille with cosmetic rear-side foam
- 100V transformer kit option (UTK20 – sold separately)

[WATCH VIDEO](#)

INTUSONIC INTUCAB 6FP100T-B 6.5" - 8 OHM SPEAKER

- 6.5" LF driver, 80W AES power handling
- 1" HF compression driver & wide-dispersion HF horn
- Horn 90 degree rotatable for horizontal or vertical use
- Advanced passive crossover for best sound quality
- Dual parallel Speakon-compatible connectors for LoZ
- 5.0mm terminal strip connector for LoZ and HiZ
- Reversible L-shaped rear panel (patent pending) with 75mm VESA/1xM10/3xM6 mounting points
- 12mm MDF construction
- Structured scratch-resistant paint, black or white
- Rugged steel front grille with cosmetic rear-side foam
- 100V transformer kit option (UTK60 – sold separately)
- CE/ROHS compliant



| CODE | COLOUR |
|--------|--------|
| NTS003 | Black |
| NTS004 | White |

[WATCH VIDEO](#)

INTUCAB COLUMN ARRAY SPEAKERS

INTUSONIC INTUCAB 4VM100T 2-WAY FULLRANGE 140W COLUMN ARRAY SPEAKER

- 4x4" LF drivers with phase plug in a closed cabinet
- 4x1" Silk dome tweeters in 5° down-facing wave guide
- Focused vertical and wide horizontal dispersion
- Advanced passive crossover for best sound quality
- Dual parallel Speakon-compatible connectors
- 5.0mm 4-pin terminal strip connector (2x2 parallel)
- 75mm VESA (rear) / 1xM10 (top) / 3xM6 mounting point
- Two slot mounting plates for flush wall installation
- 12mm MDF construction
- Structured scratch-resistant paint, black or white
- Rugged steel front grille with cosmetic rear-side foam
- CE/ROHS compliant

[WATCH VIDEO](#) 



| CODE | COLOUR |
|--------|--------|
| NTS016 | Black |
| NTS017 | White |

NEW!

INTUCAB SUBWOOFERS



INTUSONIC INTUCAB 8SM300T SUBWOOFER 2X8” / 2 X 8 OHM / 2 X150W

| CODE | COLOUR |
|--------|--------|
| NTS020 | Black |
| NTS021 | White |

- Low-Profile installation subwoofer, only 270mm high
- 2x8” high-efficiency LF drivers
- 8 ohm impedance per driver, dual chamber vented design
- Terminal strip connections with individual access to both internal drivers, for separate/parallel wiring
- Additional 2 x Speakon-compatible connectors
- Thread inserts in square mounting pattern on bottom for wall mounting rail (included), allowing 4 positions
- 15mm MDF construction



- Structured scratch-resistant paint, black or white
- Rugged steel front grille with cosmetic rear-side foam
- No internal crossover (external crossover required)
- Wall mounting rail included
- CE/ROHS compliant

INTUCAB SPEAKER BRACKETS



INTUSONIC INTUCAB SUSP-M6 SPEAKER BRACKET

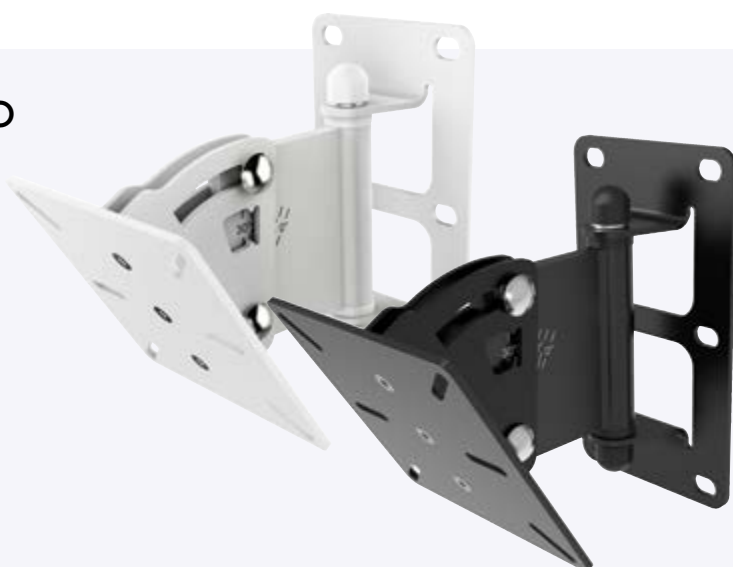
- Speaker fixation : M6 bolt & counterplate
- Wall fixation: Hole pattern (6 holes)
- Maximum load: 10 kg
- Suitable for models: 4FW50T (NTS001 and NTS002 - see page 1)

| CODE | COLOUR |
|--------|--------|
| NTS040 | Black |
| NTS041 | White |

INTUSONIC INTUCAB VESA75-100- PRO SPEAKER BRACKET

- Speaker fixation : VESA 75-100mm
- Wall fixation: Hole pattern (4 holes)
- Maximum load: 15 kg
- Suitable for models: 6FP100T (NTS003 and NTS004 - see page 1)

| CODE | COLOUR |
|--------|--------|
| NTS042 | Black |
| NTS043 | White |



INTUCAB TRANSFORMER KITS



INTUSONIC RETROFIT SPEAKER LINE TRANSFORMER KITS

- The UTK retrofit speaker line transformer kits allow to add 100V line operation capability to a range of INTUSONIC speakers

| CODE | RATED POWER | FOR USE WITH |
|--------|-------------|----------------------|
| NTS044 | 20W | 4FW50T (NTS001/002) |
| NTS045 | 60W | 6FP100T (NTS003/004) |

INTUSCAPE SPEAKERS

INTUSONIC - INTUSCAPE 4FP40R 4 INCH 8 OHM / 100V OUTDOOR/ INDOOR WALL SPEAKER



| CODE | COLOUR |
|--------|--------|
| NTS030 | Black |
| NTS031 | White |

- 4" LF driver, 40W AES power handling (vented)
- 1" silk dome tweeter & wide-dispersion HF wave guide
- Advanced passive crossover for best sound quality
- Audio-grade internal 100V line transformer (20W max)
- Mode switch for 8 Ohm / 2.5W / 5W / 10W / 20W settings

- 4P-5.0mm terminal strip for input & parallel output
- ABS resin body with M6 safety lug mounting point
- Structured scratch-resistant surface
- Rustproof aluminum front grille
- Multi-angle ball head bracket with stainless steel rod
- Waterproof cable gland cover with 2 mounting angles
- CE/ROHS compliant

[WATCH VIDEO](#)



INTUSCAPE 6FP80R 6" 8 OHM / 100V SPEAKER OUTDOOR/ INDOOR WALL SPEAKER



| CODE | COLOUR |
|--------|--------|
| NTS032 | Black |
| NTS033 | White |

- 6" LF driver, 80W AES power handling (vented)
- 1" silk dome tweeter & wide-dispersion HF wave guide
- Advanced passive crossover for best sound quality
- Audio-grade internal 100V line transformer (40W max)
- Mode switch for 8 ohm / 5W / 10W / 20W / 40W settings
- 4P-5.0mm terminal strip for input & parallel output

[WATCH VIDEO](#)

- ABS resin body with M6 safety lug mounting point
- Structured scratch-resistant surface
- Rustproof aluminum front grille
- Multi-angle ball head bracket with stainless steel rod
- Waterproof cable gland cover with 2 mounting angles
- CE/ROHS compliant



INTUFORCE STEREO AMPLIFIERS



NTS050

INTUSONIC INTUFORCE 2SDL70 2 X 65W - 4 OHM STEREO AMPLIFIER

- 2 individual amplifier blocks with 65W power @ 4 Ω each



WATCH VIDEO

- Class D topology with switch mode power supply
- Balanced (TRS and 3.5mm terminal strip) inputs
- Ultra-High CMRR input circuitry for long cable runs
- Input forwarding switch for stereo and parallel mono modes
- Rear-side volume control for each channel with Peak LED
- Separate 100Hz HPF for both inputs

- Line-level LINK output on 3.5mm strip connectors with routing pre/post-volume for flexible scaling of cascaded systems
- External MUTE contact
- Speaker output via 5.0mm terminal strip connector
- Noiseless convection cooling without fan
- Full metal case, supplied with TPR bumper corner, surface mounting brackets and front mounting brackets
- CE/ROHS compliant



- JUP2 rackmount kit for 19" rack mounting available optionally (see below)

NTS090

INTUSONIC INTUPAK JUP2 RACKMOUNT KIT FOR 2SDL70 AND VLA42



- Dual-bay rack-mounting panel · Compatible with 140mm and 180mm products
- U-shaped structure from zinc-plated steel · Screws included
- Compatible with 2SDL70 (NTS050 - see above) and VLA42 (NTS062 - see page 7)

INTUPAK VOLUME/SELECTOR NODE & REMOTE

NTS062

INTUSONIC - INTUPAK VLA42 4-IN-1 VOLUME/SELECTOR NODE



WATCH VIDEO

- IR receiver and 3.5mm TRS IR extension port. IRB44 remote included



- 4-line level inputs (1x3.5mm-strip/balanced, 3xRCA-unbalanced)
- Input 1 with Ultra-High CMRR input circuitry for long cable runs.
- Balanced master output (3.5mm terminal strip)
- Front volume control with 8-LED volume indicator
- Front source selector switches with indicator LEDs

- Indicator LED for remote input selection on wall panel
- RJ45 port for wall control panel (e.g., VRE11)
- Separate RJ45 port for external RS485 control
- High-headroom digital potentiometer circuitry
- Supplied with TPR bumper corners, surface mounting brackets & front mounting brackets.
- JUP2 rackmount kit for 19" rack mounting available optionally (NTS090 - see page 6)

NTS063

INTUSONIC -INTUPAK VRE11 4+1 VOLUME/SELECTOR REMOTE

- Replicates all main unit controls: source selector, volume control, volume indicator (8 LEDs)
- Additional local stereo 3.5mm TRS input (mono audio transmission to main system)
- Includes 2 metal panels, compatible with common EU/GB wall box sizes.
- Connection to main unit via standard Cat5/Cat6 cable / Intulink (RS485) via CAT5/6
- Assignable to one of 8 zones via on-board DIP-switch
- Multiple units can be daisy-chained with "last setting rules" system.
- No PSU required - power supply provided by main unit (max. 50m)
- Compatible with VLA42 (see above and other Intusonic products with RS485 source/volume setting



- IR remote feature (IRB44 remote control included)



WATCH VIDEO 



NTS051

INTUSONIC INTUFORCE 2SDL160 2 X 150W-4 OHM STEREO AMPLIFIER



- 2 individual amplifier blocks with 150W power @ 4 Ohm each
- Class D topology with switch mode power supply
- Balanced (XLR-TRS Combo and 3.5mm terminal strip) inputs
- Ultra-High CMRR input circuitry for long cable runs
- Mono-summing option for two incoming stereo signals (on 3.5mm terminal strip connectors) enables two stereo signals into two mono signals
- Input forwarding switch for stereo and parallel mono modes

- Rear-side volume control for each channel with Peak LED
- Separate 2-Band-EQ and 100Hz HPF for both inputs
- XLR line-level LINK output with selectable routing pre/post Volume/EQ to allow flexible scaling of cascaded systems
- External MUTE contact
- Speaker output via 5.0mm terminal strip connectors
- Noiseless convection cooling without fan
- Full metal case with separately detachable rack ears and handles
- CE/ROHS compliant



INTUSONIC INTUFORCE 4SDL160 4 X 150W-4 OHM STEREO AMPLIFIER

SEE PAGE 9

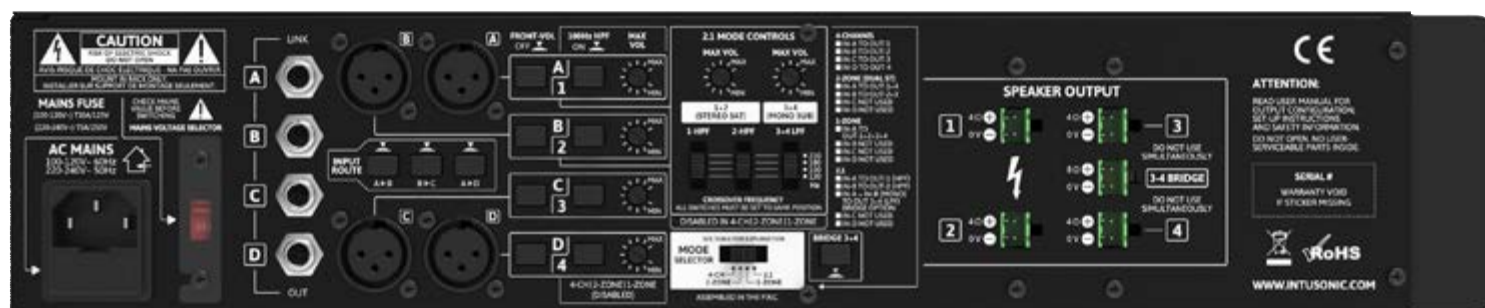
INTUFORCE STEREO AMPLIFIERS

WATCH VIDEO 



NTS052

INTUSONIC INTUFORCE 4SDL160 4 X 150W-4 OHM STEREO AMPLIFIER



- 4 individual amplifier blocks with 150W power @ 4 ohm each
- Class D topology with switch mode power supply
- Amplifier 3 and 4 bridgeable via rear-panel switch (front LED)
- Front-panel controls for volume and indicators for signal and clip per channel plus protection indicator per channel pair
- Rear-side switch to disable front-side volume controls
- Rear-side adjustable maximum volume per channel
- Rear-side switchable 100Hz HPF per channel
- Input section with balanced XLR connectors and ultra-high CMRR circuitry for long cable runs
- Input signal throughput via balanced TRS Link connectors
- Input signal forwarding switches to set 1-to-4, 2-to-2 and 4-to-1 configurations without external cabling
- Mode switch to select 4-Zone, 2-Zone, 1-Zone and 2.1 modes
- Active crossover with 4 selectable frequencies (120/150/180/ 210Hz) for 2.1 Mode, separate sat/sub volume controls
- Speaker output via 5.0mm terminal strip connectors
- Noiseless convection cooling without fan
- Full metal case with separately detachable rack ears and handles

WATCH VIDEO 



NTS060

INTUSONIC -INTUWORX- PAA71 1U MIC LINE AUDIO MIXER

- 5 stereo inputs switchable balanced-mic/ unbalanced-line
- 1 balanced stereo input (FOH input), switchable to 3.5mm TRS input on the front panel or internal wireless audio receiver
- 1 dedicated microphone input on rear-side 3.5mm strip connector
- Rear-panel gain control, front-panel 2-Band EQ and front-panel level control for all input channels (no gain for FOH)
- 12V phantom power for microphones by internal jumper
- Adjustable auto talk-over (music level reduction if mic used)

- Internal LINKOUSTIC 4.2 wireless audio link with front-side antenna and forced pairing-release function
- One stereo master output (balanced 3.5mm strip connectors)
- Rear-side adjustable maximum level control for master output
- Rear-side mono switch for master output
- 8-LED level meter for stereo master output
- Emergency input (replaces master by emergency signal)
- Output mute contact to externally mute the output
- 3.5mm headphones output with volume control
- Unbalanced record output
- Internal wide-voltage linear PSU for excellent audio dynamics
- Detachable rack ears and handles

INTUSONIC-INTUWORX - DLA26 2-IN-6 STEREO LINE SPLITTER

SEE PAGE 11



INTUWORX STEREO LINE SPLITTER



NTS061

[WATCH VIDEO](#)

INTUSONIC-INTUWORX - DLA26 2-IN-6 STEREO LINE SPLITTER

- 2 balanced stereo inputs and 6 balanced stereo outputs
- Each output can be assigned to one of the two inputs
- Mute switch and overload indicator for both inputs
- Signal-through connectors for both inputs to daisy chain more units or connect other devices
- All outputs with front-side volume control, 2-Band EQ, and overload indicator
- Rear-side maximum volume control for every output
- Rear-side mono switch for every output
- Rear-side switchable 100Hz HPF for every output
- All outputs with 1/4" balanced TRS and 3.5mm terminal strip output connectors
- Mute contact for external shutdown of all outputs by contact closure
- Auto-sensing emergency input with priority for incoming emergency message and adjustable message volume
- Internal wide voltage swing-linear power supply for excellent audio dynamics
- Full metal case with separately detachable rack ears and handles

NEW!



NTS065

WATCH VIDEO 

INTUSONIC INTUWORX PAA42 MEDIA PREAMP / MIXER MEDIA / FM DAB PLAYER

• LINKOUSTIC 5.0 receiver; incl. IR remote.



- 3 unbalanced line stereo inputs (RCA) with input gain control
- 1 balanced stereo input (1/4" FOH input) with input gain control
- 1 unbalanced 3.5mm TRS stereo input on front panel
- 1 external mono audio source through VRE11 remote wall panel
- Front source selector switches with 7 source indicator LEDs
- 1 rear-panel balanced mono priority input with level control for chime players, message players, paging systems or juke boxes
- 2 balanced microphone inputs with rear-side 3.5mm strip connector, and additional 1/4" TRS input for Mic-2 on front panel
- Mic inputs with rear-panel gain control, switchable phantom power (12V) and high pass filters plus front-panel 2-Band EQ, volume controls, on-air switches and adjustable talkover
- Internal USB media player/tuner with file/folder access; 128x64 LCD display; regular/random play sequence, elapsed/remain time mode
- FM/RDS tuner mode, 4-jingle player with scheduled play mode
- Balanced main output on 3.5mm strips; rear-panel mono switch, max level control, 2-band-EQ; volume control with 8-LED indicator
- Zone output on 3.5mm terminal strips; rear-panel mono switch, max level control. Zone source switchable Main/Line1/Line2
- Evac features: emergency input replaces master signal with emergency signal at adjustable level; output mute contact
- Unbalanced record output
- Metal case with detachable ears and handles

INTUGRID 2 ZONE AUDIO ROUTER



NEW!



NTS070

INTUSONIC - INTUGRID - HMA72- 2 ZONE AUDIO ROUTER

- 4 unbalanced line stereo inputs (RCA) with input gain control
- 1 balanced stereo input (1/4" FOH input) with input gain control
- 1 unbalanced 3.5mm TRS stereo input on front panel
- 1 external mono audio source through HRE11 remote wall panel
- Built-in LINKOUSTIC™ 4.2 wireless audio link
- 2 balanced microphone inputs on 3.5mm terminal strips, with front-panel gain control, and rear-panel phantom power switch
- 2 zone outputs on 3.5mm terminal strips; each with rear-panel mono switch, 100Hz HPF, max level control, 2-band EQ, adjustable paging/emergency volumes, adjustable priority damping, microphone incl./excl./priority, HZE11 wall remote interface
- 2x8 LCD display with encoder and IR remote for user zone settings
- Wall panels can be disabled on main unit
- Evac features: emergency input replaces master signal with emergency signal at adjustable level; output mute contact
- Internal SMPS, metal case with detachable ears and handles

Compatible with HZE11 (NTS080 - see back cover)

INTUGRID 4 ZONE AUDIO ROUTER

NEW!



WATCH VIDEO



NTS071

INTUSONIC INTUGRID HMA74 - 4 ZONE AUDIO ROUTER

- 4 unbalanced line stereo inputs (RCA) with input gain control
- 1 balanced stereo input (1/4" FOH input) with input gain control
- 1 unbalanced 3.5mm TRS stereo input on front panel
- 1 external mono audio source through HRE11 remote wall panel
- Built-in LINKOUSTIC™ 4.2 wireless audio link
- 2 balanced microphone inputs on 3.5mm terminal strips, with front-panel gain control, and rear-panel phantom power switch
- 4 zone outputs on 3.5mm terminal strips; each with rear-panel mono switch, 100Hz HPF, max level control, 2-band EQ, adjustable paging/emergency volumes, adjustable priority damping, microphone incl./excl./priority, HZE11 wall remote interface
- 8x2 LCD display with encoder and IR remote for user zone settings
- Wall panels can be disabled on main unit
- Evac features: emergency input replaces master signal with emergency signal at adjustable level; output mute contact
- Internal SMPS, metal case with detachable ears and handles

Compatible with HZE11 (NTS080 - see back cover)

INTUGRID REMOTE CONTROL PANEL

NTS080

INTUSONIC - INTUGRID - HZE11 ZONE REMOTE CONTROL PANEL

- Replicates all main unit controls: source selector, volume control, display content
- Additional local inputs: stereo 3.5mm Line & Mic 6.35 mm TRS (mono transmission to main system)
- Includes 2 metal panels, compatible with common EU/GB wall box sizes
- Connection to main unit via standard Cat5/Cat6 cable
- Assignable to one of 8 zones via software menu
- Multiple units can be daisy-chained with “last setting rules” system
- No PSU required – power supply provided by main unit (max. 50m)
- Compatible with HMA7x and other Intusonic products with RS485 source/volume setting
- CE/ROHS compliant



- IR remote feature (IRB44 remote control included)

Compatible with HMA72 (NTS070 - see page 13) and HMA74 (NTS071 - see page 14)



NEW!



INTUSONIC