



This user manual contains essential information in relation to safe use and should be retained with the item for reference

Winchester Rotating Bather



VR130SS

Fixing and Maintenance Instructions



Aidapt Bathrooms Limited
Lancots Lane
St Helens
Merseyside, WA9 3EX UK
T: 01744 745020
E: sales@aidapt.co.uk W:
www.aidapt.co.uk

INTRODUCTION

Thank you for choosing to purchase the Winchester Rotating Bather. The Winchester is manufactured using only the finest materials available. If used in accordance with the user instructions the Winchester should give you many years of continuous service.

DUTY OF CARE

Always consult with the prescriber/Physiotherapist if you are in any doubt that this product is suitable for your use.



N.B. This equipment must be installed by a competent person and a risk assessment may be needed as to the suitability of the chair for the particular user.

160kg (25st.) weight limit

Do not exceed the weight limit stated – doing so could put the user at risk.

INTENDED USE

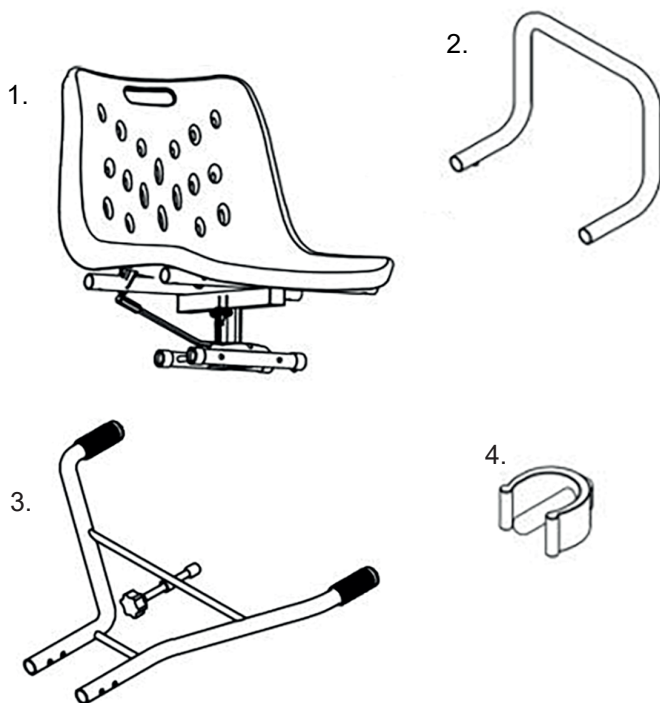
The Winchester seat rotates enabling the user to transfer onto the seat, then rotate back to allow seating bathing on a secure platform. It is designed to be used as a bathing aid only.



SAFETY

- Check the product for any visible damage. If you see any damage or suspect a fault, do not use your product, but contact your supplier for support.
- Confirm bath tub suitability (the Winchester is not suitable for use with corner baths, baths which have uneven/profiled top edges or some baths with deeply moulded side panels)
- The Winchester can be adjusted to suit bath tubs between the widths of 660mm and 760mm. It should not be used or adapted for use with any other size.
- Do not exceed the maximum user weight of 160 kg (25 st).
- Check all fixings are installed correctly.
- Before each use check to ensure all four feet of the bath seat frame are secure on the edge of the bath by at least 50 mm (2").
- Check that the handwheel screws are contacting either side of the bath wall. Do not over tighten the handwheels as this could damage the bath.
- Always sit back in the seat and do not perch on the edge
- Do not stand on the seat or any other part of the product.
- Regularly check for seat and frame damage - remove from use immediately and contact supplier should any sign of damage be observed.

BOX CONTENTS



1. Seat Assembly x 1
2. Armrest x 2
3. Mounting Frame x 2
4. Fixing E-clips x 4
5. User Instruction x 1



If any of the above parts are missing or damaged, do not attempt to assemble the product and contact your supplier for assistance.

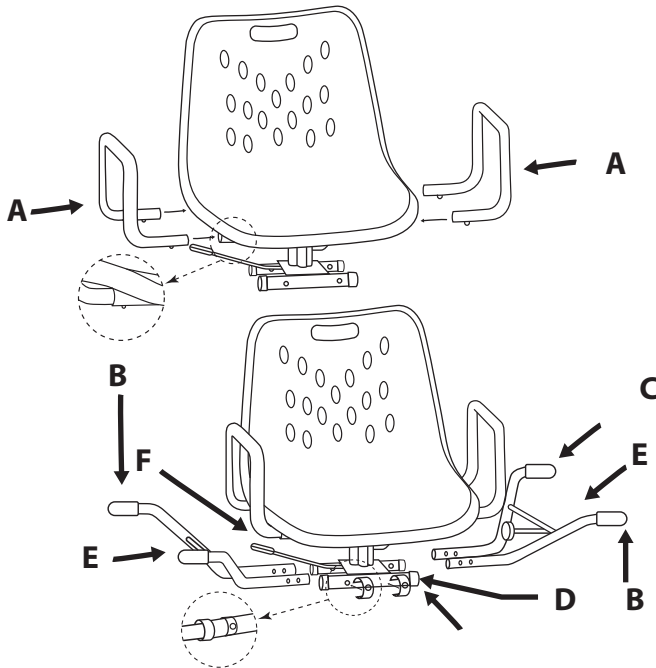
INSTALLATION INSTRUCTIONS

1. Firstly remove the Winchester rotating bather from its packaging. Visually check for any damage and fully test all moving parts prior to installation.
2. Check the width of the bath you intend to install the Winchester rotating bather onto. The Winchester is designed to fit standard rectangular bath tubs between 660mm and 760mm.



Do not attempt to install the Winchester on any other type of bath, doing so may seriously compromise the safety of the use

3. Slide each armrest (A) into the locating tubes on the seat assembly until the spring button clips “snap” into position, see fig. 1
4. Slide the mounting frame (B) into the locating tubes on the seat assembly and secure using the E clips. Ensuring that the E clips are fully installed into the tube.



FITTING TO THE BATH

1. Place the seat onto flat bath ledges.



IMPORTANT: At least 50 mm (2") of ALL the mounting frame feet (C) must rest on the flat sides of the bath.

2. If necessary extend the mounting frame by removing the fixing E-clips (D), adjusting the width of the frame so that it is closest to the external width of the bath and replacing the clips, check they are all replaced and secured correctly.
3. Secure the mounting frame using the clamps (E) under the seat by turning the hand wheels until secure against the walls of the bath on both sides.
4. Check the frame is secure, but do not over tighten as this could damage the bath. The Winchester is now ready for use.



Safety Note: If the Winchester is removed and replaced over the bath, it is important the fixing clamps are re-adjusted and tightened as detailed above.

USE



Check that the seat is securely fixed to the tub prior to each use.

1. Raise the locking handle (F) and rotate until the seat is facing the user, lower the handle and lock into position.
2. Transfer user into seat. Raise locking handle and rotate slowly into bath, taking care when raising legs over the side of the bath.
3. Ensure seat is locked into position and no longer rotates freely before commencing washing.



Safety Notes:

- Sit back securely in the seat, do not perch on the edge of the chair
- Please ensure you take care when adjusting chair positions to avoid trapping or pinching of body parts.
- This chair is not suitable for use by children. Any children or animals within the vicinity must be supervised by an adult at all times and should never be allowed to play with the chair.

CLEANING

All of the product components are manufactured from quality materials. However, it is very important that you only clean your Winchester using a non-abrasive cleaner or mild detergent with a soft cloth avoid using lime scale remover. Abrasive cleaners e.g. CIF and or abrasive cleaning pads will seriously damage your product beyond repair.

N.B. Regular daily cleaning will reduce the build up of lime scale on your product.

UNDER NO CIRCUMSTANCES must you use any abrasive cleaners or materials on any of the components.

If in any doubt, please do not issue or use, but immediately contact your supplier for service support.

When reissuing, a risk assessment may be required as to the suitability of the seat for a particular user

USE OF BATH OILS

Caution should be observed if you are using any form of bath oils or oily skin preparation with your Winchester as the seat surface may become slippery.

In the event of using any such oil, your seat must be thoroughly cleaned with a suitable detergent to break down any oily residue. Failure to observe this recommendation could impair your safety.

CARE & MAINTENANCE

It is recommended the product is wiped down after use, or at regular intervals to maintain the quality finish – see cleaning instructions.

Inspect the product at regular intervals, pay particular attention to the swivel and lock movement.

Check all fixings, ensure they are secure.

Check all parts for signs of wear or damage.

If the product is not moving freely or you suspect a fault do not use – contact your dealer immediately.

REISSUE

If you reissue or are about to reissue this product, please thoroughly check all components for their safety.

This includes:

- Tightness of all nuts/bolts and other screw in/bolt in/push in components.
- Wear and tear or damage to plastic seat, non-slip leg, and frame
- Secureness of seat lock
- Function of seat swivel

IMPORTANT INFORMATION

The information given in this instruction booklet must not be taken as forming part of or establishing any contractual or other commitment by Aidapt Bathrooms Limited, Aidapt (Wales) Ltd or its agents or its subsidiaries and no warranty or representation concerning the information is given.

Please exercise common sense and do not take any unnecessary risks when using this product; as the user you must accept liability for safety when using the product.

Please do not hesitate to contact the person who issued this product to you or the manufacturer (detailed below) if you have any queries concerning the assembly/use of your product.



Aidapt Bathrooms Limited
Lancots Lane St Helens Merseyside,
WA9 3EX UK
T: 01744 745020
E: sales@aidapt.co.uk
W: www.aidapt.co.uk



Aidapt BV
Algolweg 22
3821BH Amersfoort
Netherlands
E. nederland@aidapt.eu