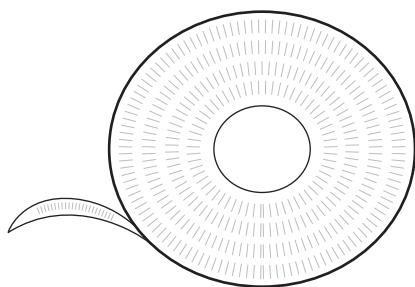




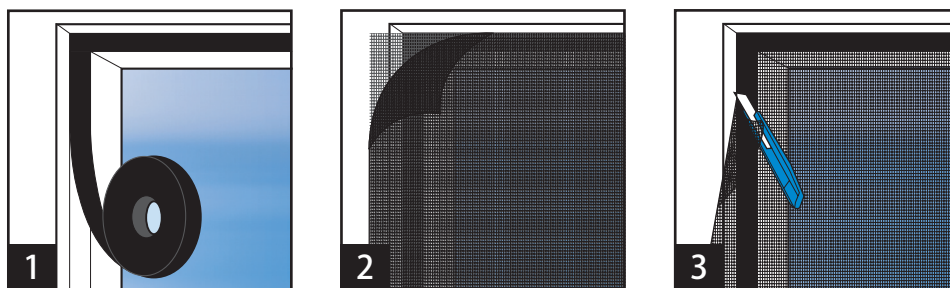
# **GH3027 & GH3028**

## **Cut-to-Length Strong Hook & Loop**



# **User Manual**

Please retain for future reference



### **PRODUCT SAFETY**

- This product is not a toy; children shall not play with the product.

### **OPERATING INSTRUCTIONS**

- (A) Ensure the area is clean and dry before applying  
(B) Place the adhesive strip on the outer rim

**Electrovision Ltd.**  
Lancots Lane  
Sutton  
St. Helens  
Merseyside  
**WA9 3EX**

[www.Electrovision.co.uk](http://www.Electrovision.co.uk)