



GH324

Collapsible Live Animal Trap



User Manual

Please retain for future reference

IMPORTANT

Installer and users please note:

Please read the entire instruction manual before using the product and then save it for future reference. We reserve the right for any errors in text or images and any necessary changes made to technical data.

PRODUCT SAFETY

- WARNING: Choking hazard. Small parts. Keep away from children and pets
- WARNING: Sharp edges. Take care when assembling and setting the trap
- Children shall not play with the trap.
- Take care handling the trap when it is armed, as it could trigger and cause personal injury
- Do not use the trap for anything other than its intended use.

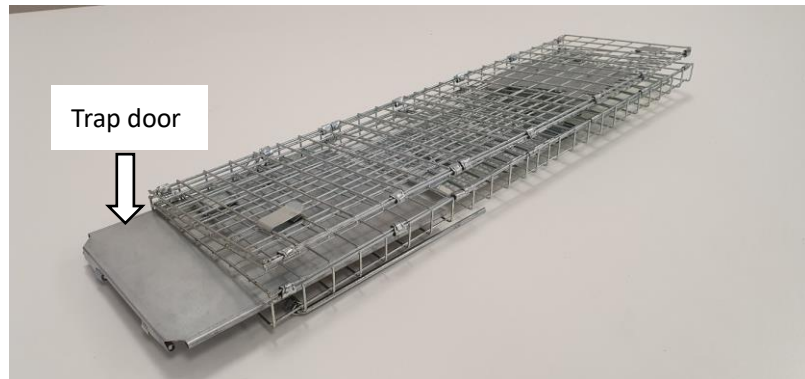
! IMPORTANT INFORMATION !

Once you know an animal is confined in a trap, their welfare is governed by the Animal Welfare Act 2006. This means the person setting the trap is responsible for their welfare and it is an offence to cause, or fail to prevent, unnecessary suffering to the animal. Alternatively, it is an offence to release certain species such as the black rat (*Rattus rattus*) or far dormouse (*G. glis*) into the wild (except under licence); this means that the use of a live-catch trap in relocating such a rodent would constitute an offence. It is recommended that you seek advice from the relevant environmental agency governing your local area.

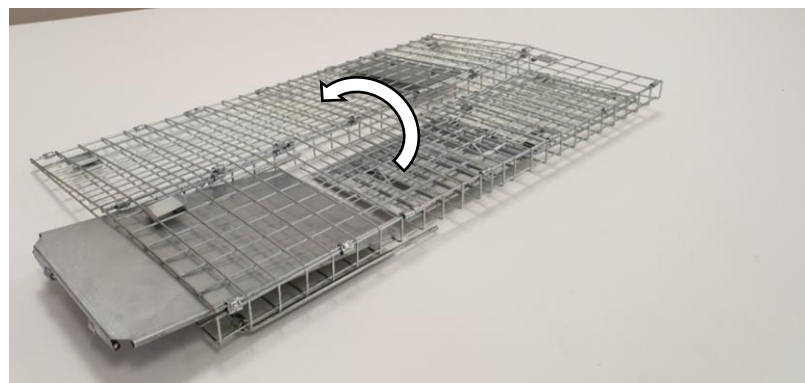
ASSEMBLY INSTRUCTIONS.

1. Remove all packaging and lie the trap flat on a surface.

Note: The trap door (arrow) is spring loaded and care should be taken to ensure this remains closed and does not spring open unexpectedly during assembly



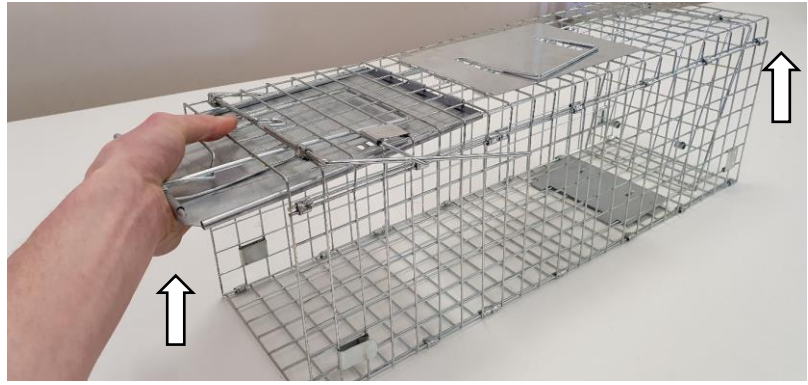
2. Unfold the top part of the trap



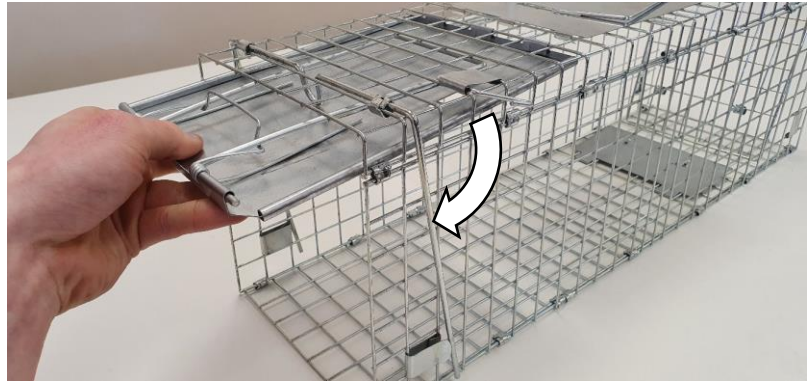
3. Hold the trap door closed and flip the whole trap over



4. Lift the top part of the trap to form a square section, as you do this, the rear wall of the trap should fall into place



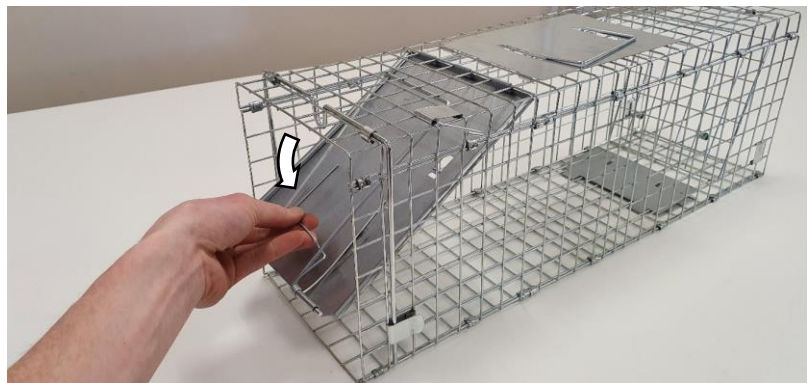
5. Swing the door stop rod down on either side of the trap



6. Clip the door stop rod into the metal clips on both sides



7. The door can now be gently lowered down



8. The spring arm on the door will stop against the door stop rod

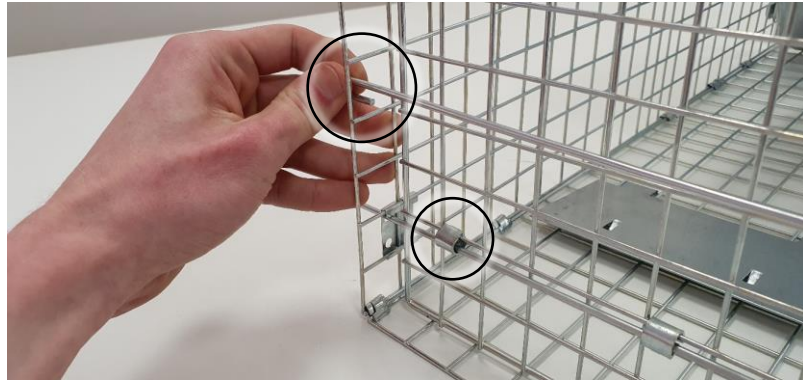


9. Rotate the trap so you are looking at the back of it.



10. Take the hooked U shaped rod and insert the straight end through one of the holes in the metal plates on the side of the trap

11. Thread the straight rod through the 2 metal clips on the rear wall and through the metal plate on the other side of the trap.



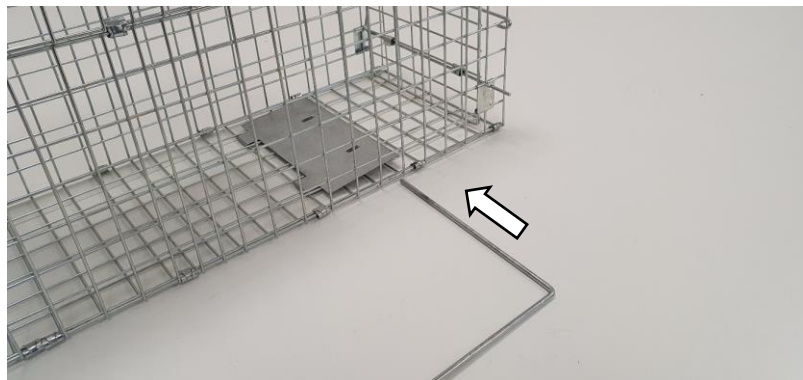
12. Hook the hooked part of the rod over a rail on the side wall

13. Ensure the rear wall resembles the image to the right

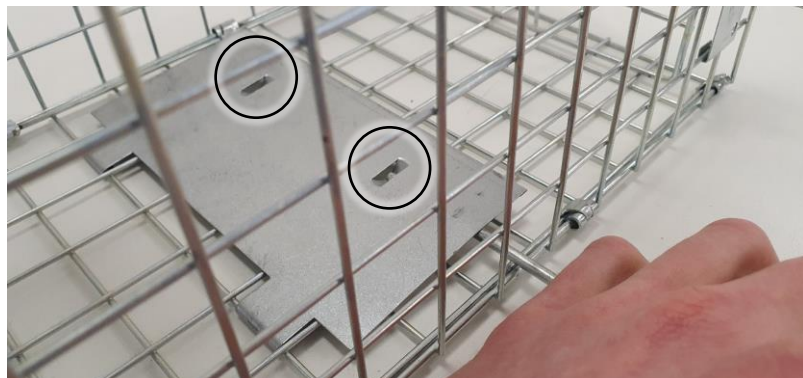


14. Insert the L shaped trigger rod through the side of the cage

Note: with the trap door on the left and the rear wall on the right, the rod should be inserted into the wall facing you



15. Thread the rod through the 2 clips on the underside of the trigger plate



16. Pull the hook end of the trigger rod up to the hook end of the locking rod

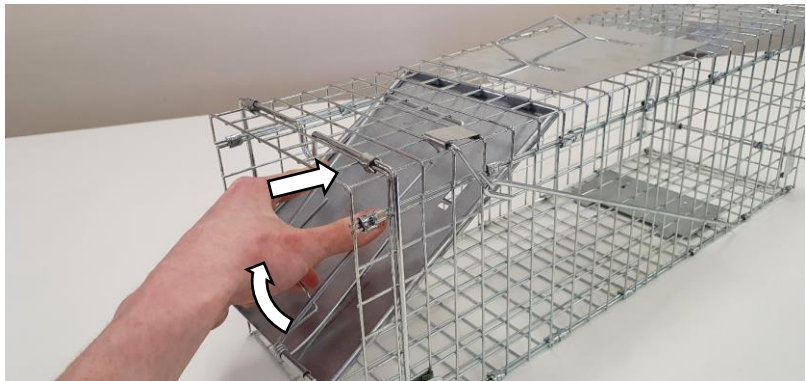


17. Place the hooks over each other so they connect at the bend

The trap is now assembled



18. To set the trap, push the spring arm inwards and lift the door



19. Lift the door until it lies flat against the top of the trap



20. Holding the door up, locate the locking pin and move this under the notch on the door



21. Release the door and allow the spring pressure on the locking pin to hold the door in place.
22. The trap is now armed, carefully add bait to the bait chamber, position the trap where required and check regularly



CLEANING INSTRUCTIONS

The trap should be cleaned periodically and each time after use with warm water and mild detergent.

SERVICE WARRANTY

Electrovision guarantees the product free from defects in materials and workmanship for a period of 1 year. Should this unit be used under conditions other than those recommended, or any attempts made to service or modify the unit, then the warranty will be rendered void. The product you buy may sometimes differ slightly from illustrations. This warranty is in addition to, and does not affect, your statutory rights. If you have any problems with this product, please call our help desk on (0845) 459 4816.