

AIDAPT BATHROOMS LTD.Lancots Lane
Sutton Oak
St. Helens
WA9 3EX

Folding Suitcase Ramp (4')

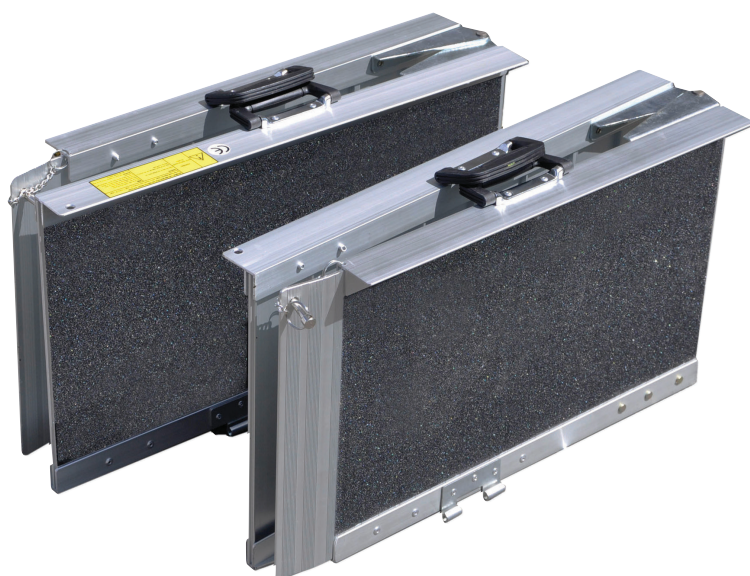
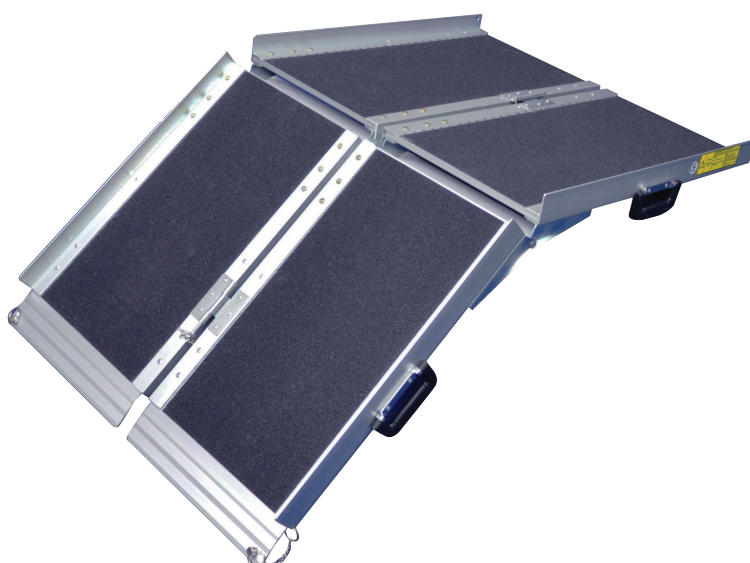
This robust Folding Suitcase Ramp is ideal for providing access to houses and cars for wheelchairs, scooters, walkers and rollators. The tri-fold ramp is supplied in two parts that can be easily slotted together and is constructed from sturdy, rust-free aluminium with strong carrying handles attached, making the unit portable and convenient to store. The ramp also features a non-slip, black gritted surface with raised side walls for safety, and has a load capacity of 272 kg (42 stone) when using both ramps joined together. This versatile ramp has easy-to-use security locks to the hinges and ends to fix the ramps together when extended and in use or to hold them closed when folded for storage or transport. The Folding Suitcase Ramp is available in 2 lengths.

Features:

- Provide access to cars and buildings for wheelchair and scooter users
- Suitable for the majority of wheelchairs and scooters
- Gritted surface for safe all-weather use
- Tri-fold design; easy to use, store and transport
- Maximum load of 272 kg (42 stone) on joined ramps

PRODUCT SPECIFICATION

Length (cm).....	50
Height (mm)	630 (CLOSED) 1220 (EXTENDED)
Width (mm)	360 (CLOSED) 740 (OPEN)
Product Dimensions (mm)	1220x740x50
Net weight (kg)	10
Packaged dimensions (HxWxL mm)	400x240x650
Display Footprint (mm)	400x240x650
Transport dimensions (mm)	400x240x650
Gross Weight (Packaged) (kg)	11
Packaging.....	PLAIN CARTON
Item priced per	1
Paper weight (kg).....	1.6
Plastic weight (kg)	0.2
Channel Depth (mm).....	50
Colour	Black
Length (Collapsed) (mm)	630
Length (Extended) (mm)	1220
Maximum Load (kg).....	272
Maximum Load (stones).....	43
Maximum User Weight (kg)	272
Maximum User Weight (stones).....	43
Overall Width (mm)	740 (OPEN)
Size.....	4 ft
Width (Extended) (mm)	740
Width (Folded) (mm)	360



Product Code: VA143D
Barcode: 5021196688174

Registered Office:
AIDAPT BATHROOMS LTD.
LANCOTS LANE, SUTTON OAK, ST. HELENS, WA9 3EX