

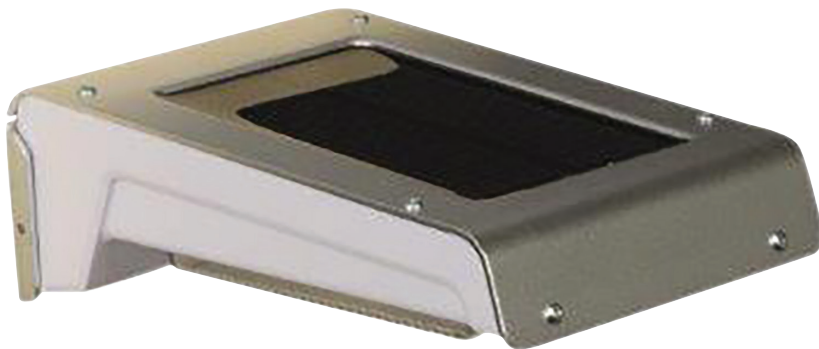
ELECTROVISION LTD.

Lancots Lane
Sutton Oak
St. Helens
WA9 3EX



Luxform Lighting Madison Solar Wall Light

This light is suitable for mounting next to front or back doors and near sheds, garages and carports etc. as functional lighting. This light features an on/off switch and a dusk/dawn sensor which means the light switches on at dusk and automatically shuts off at dawn. This high lumen solar light has a higher number of lumens relative to a normal solar light. Please remember that stainless steel is not a maintenance free product and that you need to clean the lights every 6 months to prevent discolouration.



Features:

- Solar Garden Wall Light
- Dusk / Dawn Sensor
- Higher Number of Lumens Relative to a Normal Solar Light

PRODUCT SPECIFICATIONS

Depth (mm).....	135
Height (mm).....	45
Width (mm).....	90
Product Dimensions (mm).....	45x90x135
Net weight (kg).....	0.216
Colour Rendering Index.....	White
Lumen Output.....	10
Batteries.....	3x NimH AAA 600 mAh 1,2VV
LED Type.....	Cool White
Material.....	Aluminium, Stainless Steel, Plastic
IP Rating.....	44
Item Priced Per.....	1

Product Code: LF0008

Barcode: 8719099341056

Registered Office:
ELECTROVISION LTD.
LANCOTS LANE, SUTTON OAK, ST. HELENS, WA9 3EX