

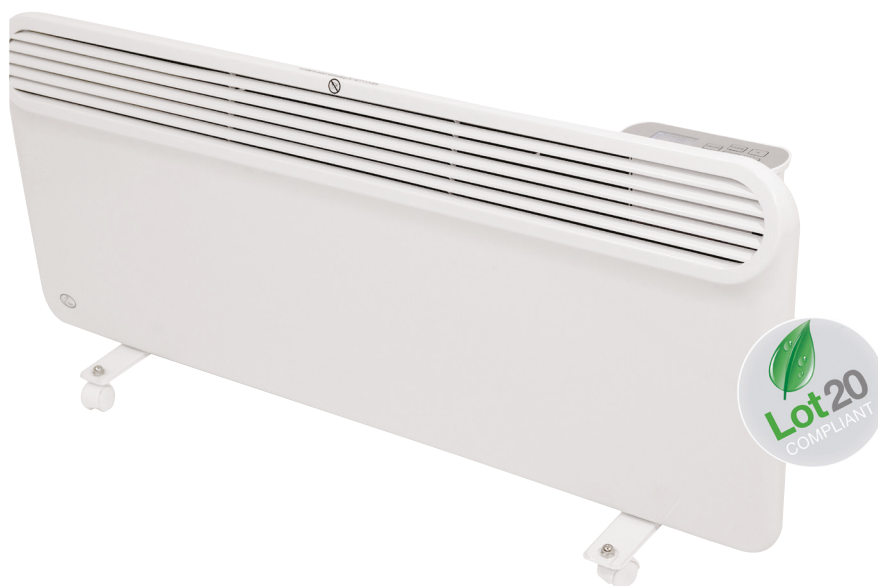
**PREMAIR APPLIANCES LTD.**

Lancots Lane  
Sutton Oak  
St. Helens  
WA9 3EX



## Programmable Panel Heater

The splashproof Programmable Panel Heater boasts quiet operation and minimal dust movement; making it ideal for allergy sufferers. The Panel Heater is suitable for use in the home or small office and is perfect for conservatories. It has a slim, contemporary design in a brilliant white finish and an elegant touch pad control panel with LCD screen. The Programmable Panel Heater offers multiple modes including frost prevention, economy and comfort settings plus an impressive, fully programmable 7 day hour-by-hour temperature mode with memory. It can be used as a free standing unit (castors supplied) or wall mounted with easy DIY installation. Safety features include thermal cut-out and IP24 rating. Available in several sizes.



### Features:

- Easy DIY wall mounting or use free standing (castors supplied)
- Quiet operation and minimal dust movement; ideal for allergy sufferers
- Suitable for use in the home, office and conservatory
- Easy to use touch pad control panel with LCD screen
- Fully programmable 7 day hour-by-hour heat settings
- Pre-set frost prevention, economy and comfort modes

### PRODUCT SPECIFICATION

Depth (mm).....	80	Installation .....	Wall Mounted or Free Standing
Height (mm).....	405	IP Rating.....	IP24
Width (mm).....	970	LCD display.....	yes
Product Dimensions (mm).....	405x970x80	Main body material.....	Metal
Net weight (kg).....	6.6	Overheat safety cut out.....	yes
Adjustable thermostat.....	yes	Power (kW).....	2
Castors for easy mobility.....	yes	Protection class I or II.....	I
Colour.....	Brilliant White	Timer (hours).....	24
Controls.....	Rocker and Touch Button	Type.....	UK Model
Frequency (Hz).....	50	Voltage (V).....	230
Frost protection setting.....	yes	Wall mountable.....	yes

Product Code: EH1556  
Barcode: 5021196713067

Registered Office:  
**PREMAIR APPLIANCES LTD.**  
LANCOTS LANE, SUTTON OAK, ST. HELENS, WA9 3EX