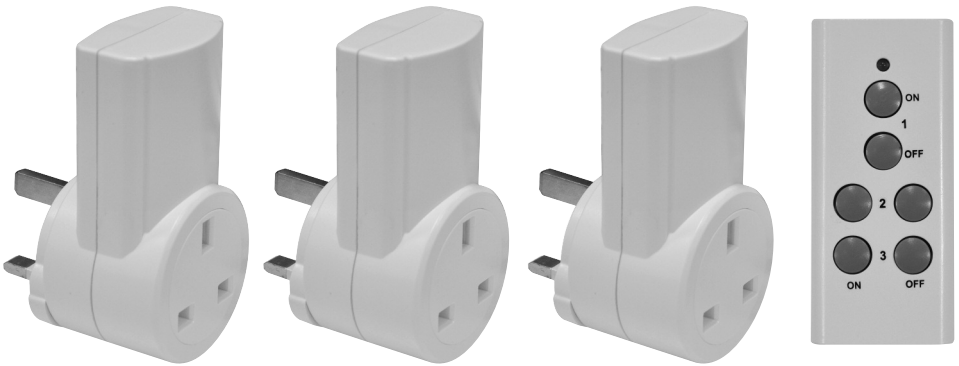




# E304AD

## 3 Way Remote Control Socket Set



**User Manual**  
Please retain for future reference

# IMPORTANT

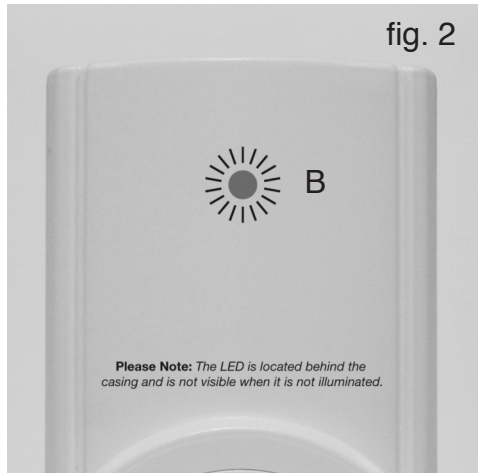
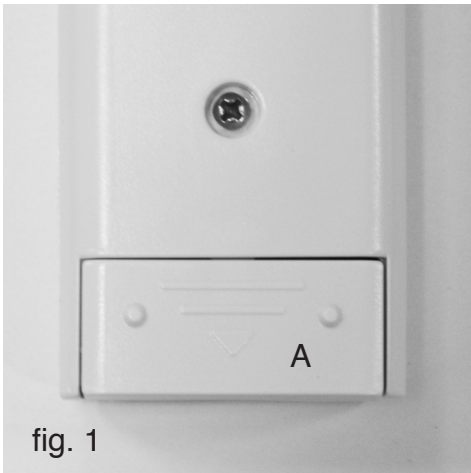
## Installer and Users please note:

These instructions should be read carefully and left with the user of the product for future reference. Before use please inspect the product for any signs of damage. If the product is damaged, DO NOT use it, and contact your supplier immediately.

## OPERATING INSTRUCTIONS

1. Open the battery compartment (A) on the rear of the remote control unit by pushing the cover in gently and sliding down (see fig. 1)
2. Insert a 12V 23A battery into the battery compartment, observing the polarity. Close the battery cover.
3. Plug one of the receiver units into a mains socket.
4. The LED indicator (B) on the front of the unit will flash (see fig. 2) **Please Note:** *The LED is located behind the casing and is not visible when it is not illuminated.*
5. Press and hold the desired ON button until the LED indicator (B) on the receiver stops flashing. More than one unit can be paired to a single channel number if so desired. (If you want more than one appliance to switch on at the same time).
6. The unit is now paired and ready to use. Repeat steps 3-5 with the remaining 2 units. These units can be programmed to the same channel number (if you want more than one appliance to switch on at the same time) or another free channel number. *If you wish to purchase additional units these can be paired to the remaining free channel number or any of the channel numbers already in use but they will be powered ON at the same time as any other equipment already paired to that channel number.*
7. The LED indicator (B) will be solidly lit when the unit is powered ON.

**Please Note:** *After a power cut the unit will always return to the OFF mode.*



## CLEANING AND MAINTENANCE

Ensure that the receiver unit has been removed from the mains socket before cleaning. The receiver unit and remote should be cleaned with a soft, dry brush. Do not use water or immerse in water. Do not use any chemical or abrasive cleaners to clean the receiver unit or remote.

## SAFETY PRECAUTIONS

- This is not a toy. Keep out of the reach of children.
- Do not attempt to open the casing of the receiver unit, there are no user serviceable parts inside and there is a **risk of electric shock!**
- Do not expose the unit or remote to rain or moisture. For indoor use only.
- Allow adequate ventilation around the receiver unit when in use and do not place near radiators, heaters or fires.
- Do not use the unit if any parts are damaged.



## SPECIFICATIONS

Material .....	Plastic and Metal
Power .....	230V~, 50Hz
Transmission Frequency .....	433.92MHz
Transmission Range .....	30m (without obstacles)
Max. Load (per socket) .....	10A
Remote Battery .....	12V 23A

## SERVICE WARRANTY

Electrovision guarantees the product free from defects in materials and workmanship for a period of twelve months. Should this appliance be operated under conditions other than those recommended, at voltages other than the voltage indicated on the appliance, or any attempts are made to service or modify the appliance, then the warranty will be rendered void. The product you buy may sometimes differ slightly from illustrations. This warranty is in addition to, and does not affect, your statutory rights. Our guarantee is administered by our retailers. If your product arrives damaged, you must contact the retailer from whom you bought it. The retailer's contact details will be on the invoice that arrived with the product, or on the e-mail you received when you placed the order. Do not contact Electrovision, only your retailer can arrange a replacement. If the product needs to be repaired or replaced, you must contact the retailer from whom you bought it. The retailer's contact details will be on the invoice that arrived with the product, or on the e-mail you received when you placed the order. If you have just received your product and require technical help in using it, please call our Help Desk on (0845) 459 4816. If you have any other technical queries about the product, please call our Help Desk on (0845) 459 4816.

Electrovision Ltd., Lancots Lane, Sutton, St. Helens, Merseyside. WA9 3EX

[www.electrovision.co.uk](http://www.electrovision.co.uk)